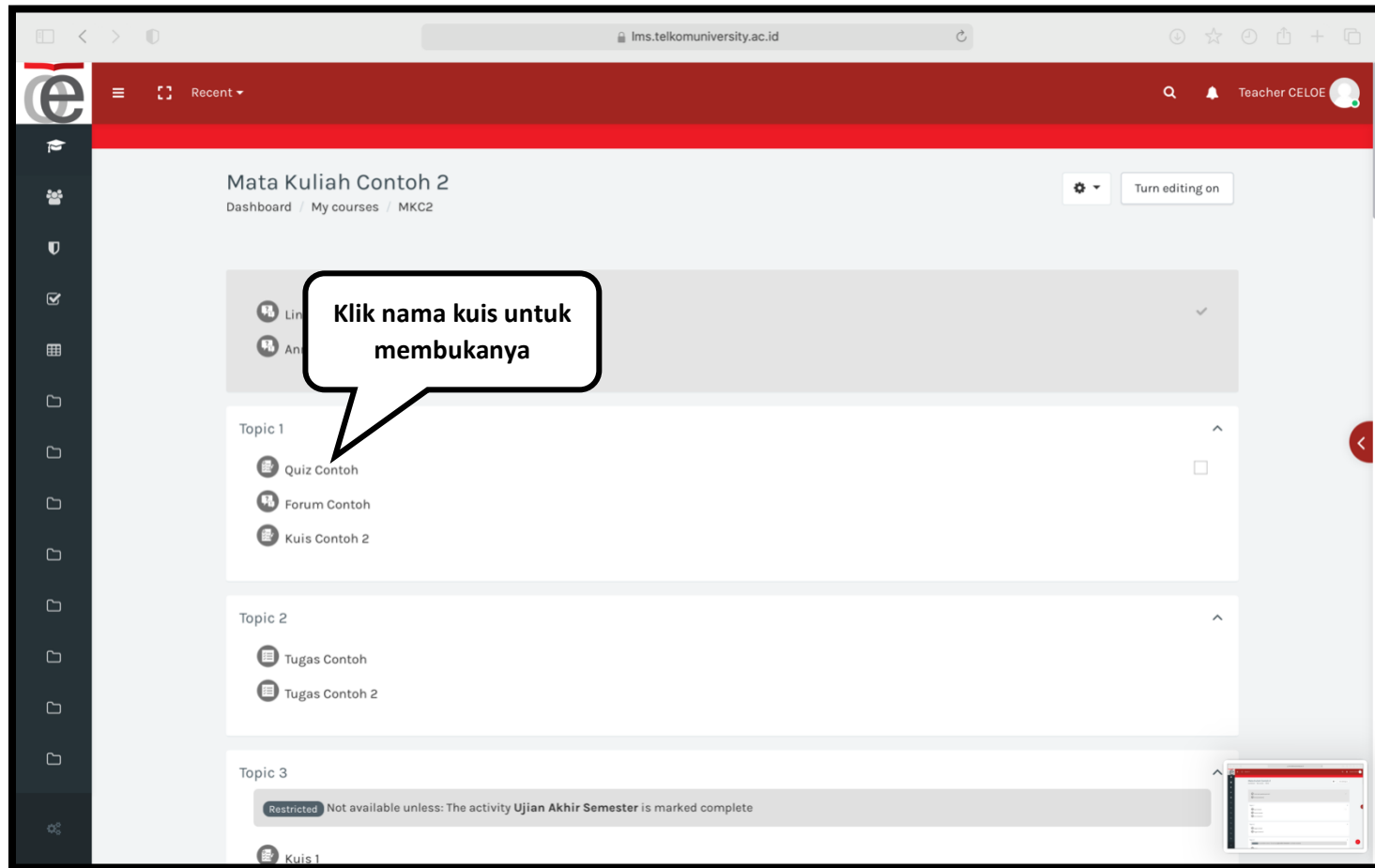


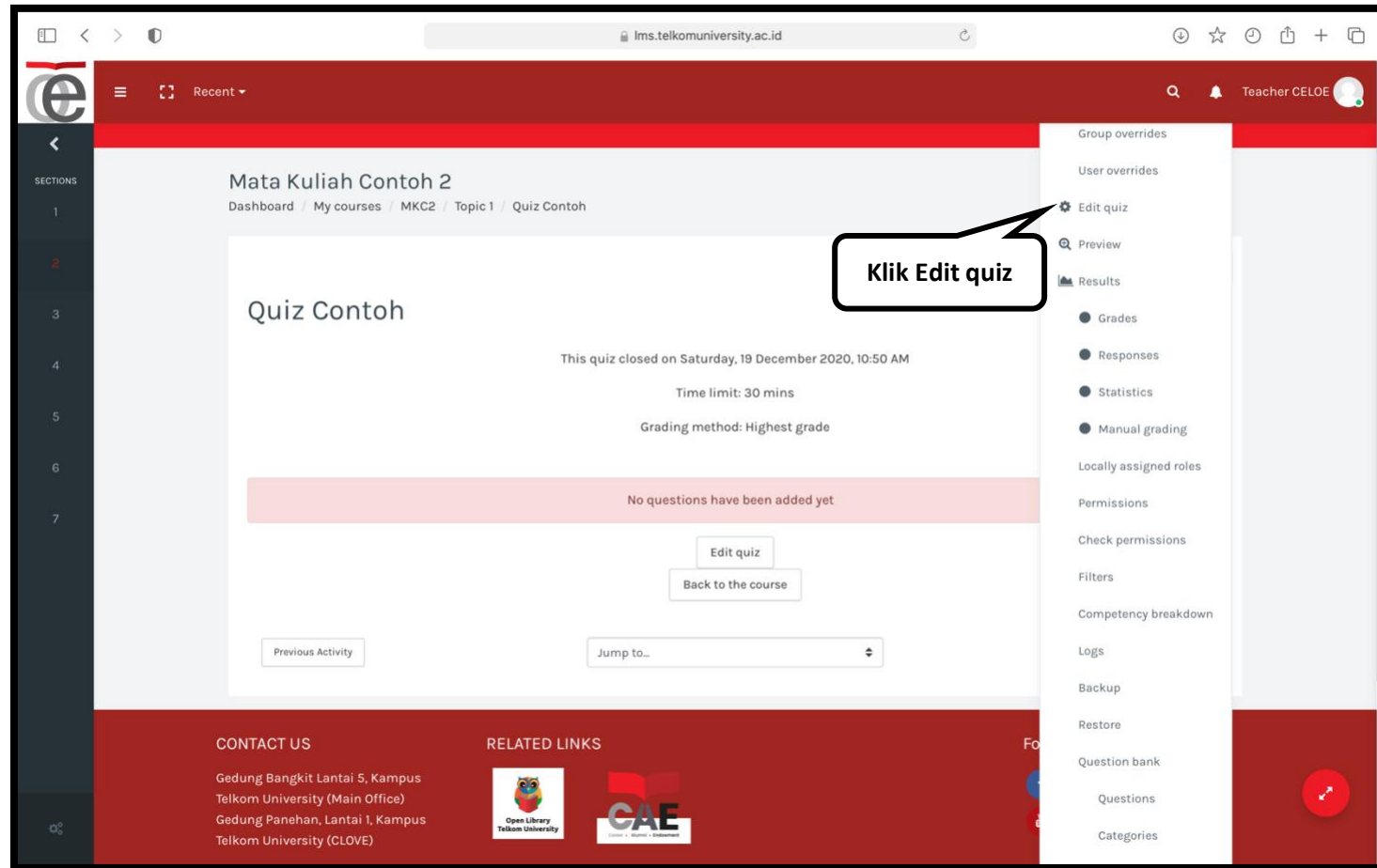
Panduan Menambahkan Soal ke dalam Kuis (Add Question)

Step 1 --- Masuk ke dalam *course*, kemudian buka kuis yang ingin ditambahkan soal.



CeLOE Service (CLOVE)

Step 2 --- Klik tombol Action Menu bergambar  , kemudian pilih **Edit quiz**.



Main Office: Gd. Bangkit Lt.5 Telkom University. Remote Office1: Gd. Marore Lt.3 Gegerkalong. Remote Office2: Gd. Marore Lt.3 Gegerkalong Gd. Panehan Lt.1 Telkom University
Helpdesk: Mail clove@telkomuniversity.ac.id; WA +62 821 1666 3563;

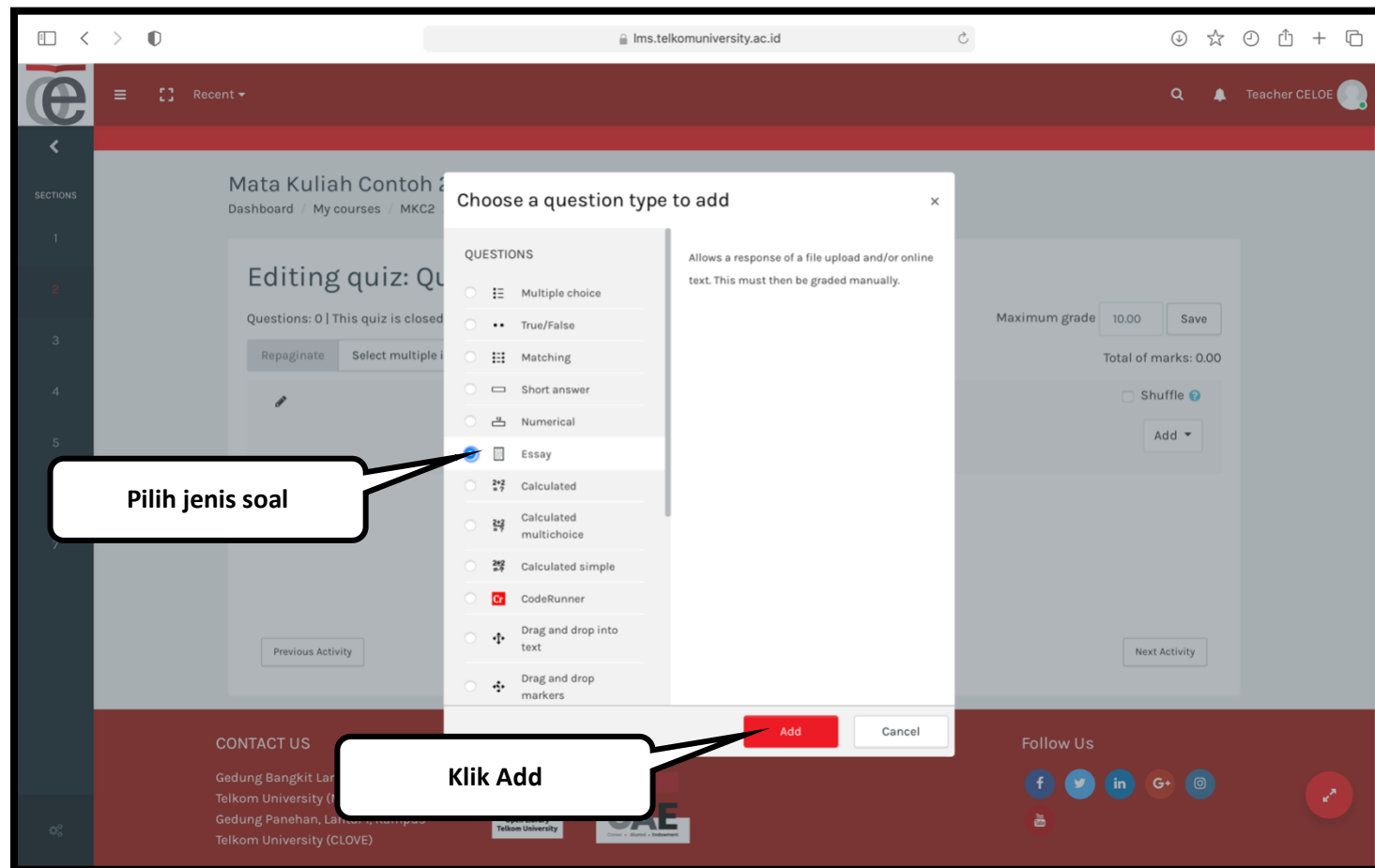
CeLOE Service (CLOVE)

Step 3 --- Klik tombol Add, kemudian pilih a new question.

Main Office: Gd. Bangkit Lt.5 Telkom University. Remote Office1: Gd. Marore Lt.3 Gegerkalong. Remote Office2: Gd. Marore Lt.3 Gegerkalong Gd. Panehan Lt.1 Telkom University
Helpdesk: Mail clove@telkomuniversity.ac.id; WA +62 821 1666 3563;

CeLOE Service (CLOVE)

Step 4 --- Pilih jenis soal yang ingin ditambahkan, kemudian klik **Add**

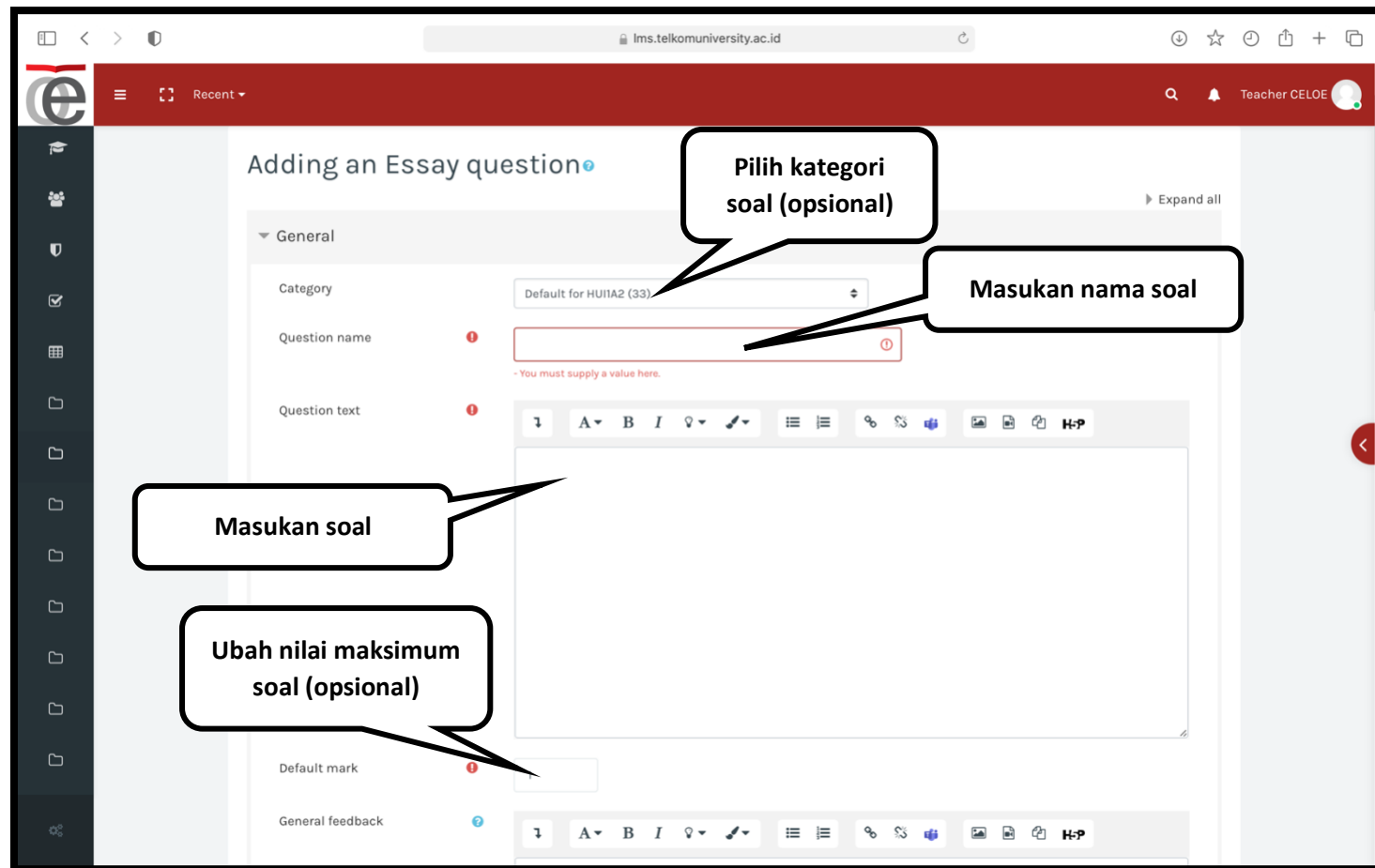


Main Office: Gd. Bangkit Lt.5 Telkom University. Remote Office1: Gd. Marore Lt.3 Gegerkalong. Remote Office2: Gd. Marore Lt.3 Gegerkalong Gd. Panehan Lt.1 Telkom University
Helpdesk: Mail clove@telkomuniversity.ac.id; WA +62 821 1666 3563;

CeLOE Service (CLOVE)

Step 5 --- Untuk jenis soal **Essay**, pilih **kategori soal** (opsional), masukan **nama soal**, soal, dan **nilai maksimum soal** (opsional). Jika sudah, klik **Save changes**.

Catatan: - Kolom lain yang tidak dijelaskan bersifat opsional dan dapat disesuaikan dengan kebutuhan.



The screenshot shows the 'Adding an Essay question' form in the CeLOE Service interface. The form is titled 'Adding an Essay question' and is divided into sections. The 'General' section is expanded, showing the following fields:

- Category:** A dropdown menu with the selected value 'Default for HUI1A2 (33)'. A callout bubble points to this field with the text 'Pilih kategori soal (opsional)'.
- Question name:** A text input field that is currently empty. A callout bubble points to this field with the text 'Masukan nama soal'. Below the field, there is a red error message: '-You must supply a value here.'
- Question text:** A rich text editor with a toolbar containing options for bold, italic, underline, link, unlink, list, and image. A callout bubble points to the text area with the text 'Masukan soal'.
- Default mark:** A text input field. A callout bubble points to this field with the text 'Ubah nilai maksimum soal (opsional)'.
- General feedback:** A rich text editor with a toolbar similar to the one above.

The interface also shows a sidebar on the left with various navigation icons and a top navigation bar with the user's name 'Teacher CELOE' and a profile picture.

CeLOE Service (CLOVE)

Step 6 --- Soal yang berhasil dimasukan ke dalam kuis akan terlihat seperti berikut:

The screenshot displays the 'Editing quiz: Quiz Contoh' interface. The page title is 'Mata Kuliah Contoh 2' and the breadcrumb trail is 'Dashboard / My courses / MKC2 / Topic 1 / Quiz Contoh / Edit quiz'. The quiz status is 'Questions: 1 | This quiz is closed'. The maximum grade is set to 10.00, and the total of marks is 10.00. A callout box points to a question: 'Soal 1, Kuis Contoh Siapa Presiden Pertama Indonesia?'. The question is worth 10.00 marks. The interface includes a sidebar with sections 1-7, a top navigation bar, and a footer with contact information.