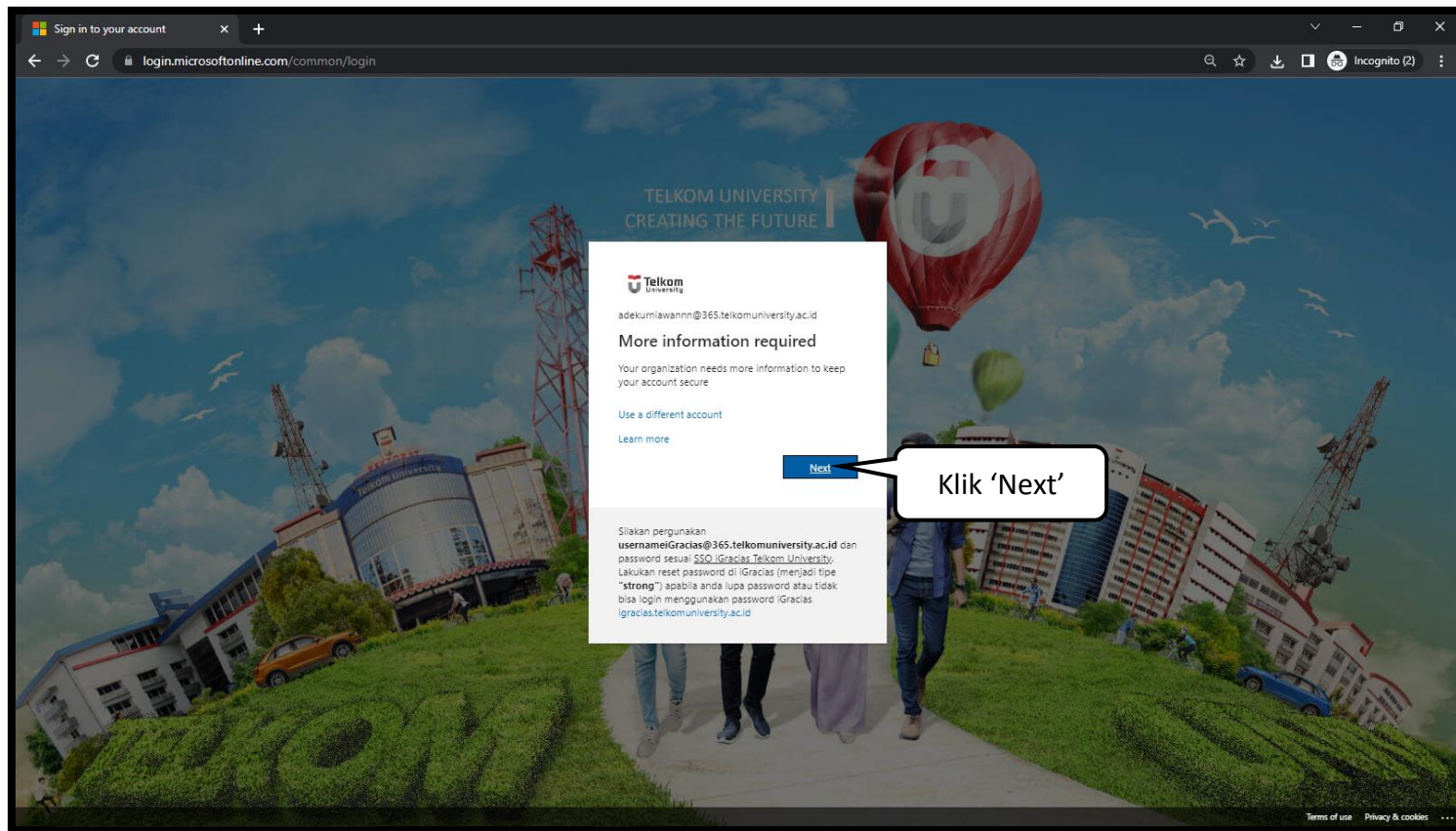


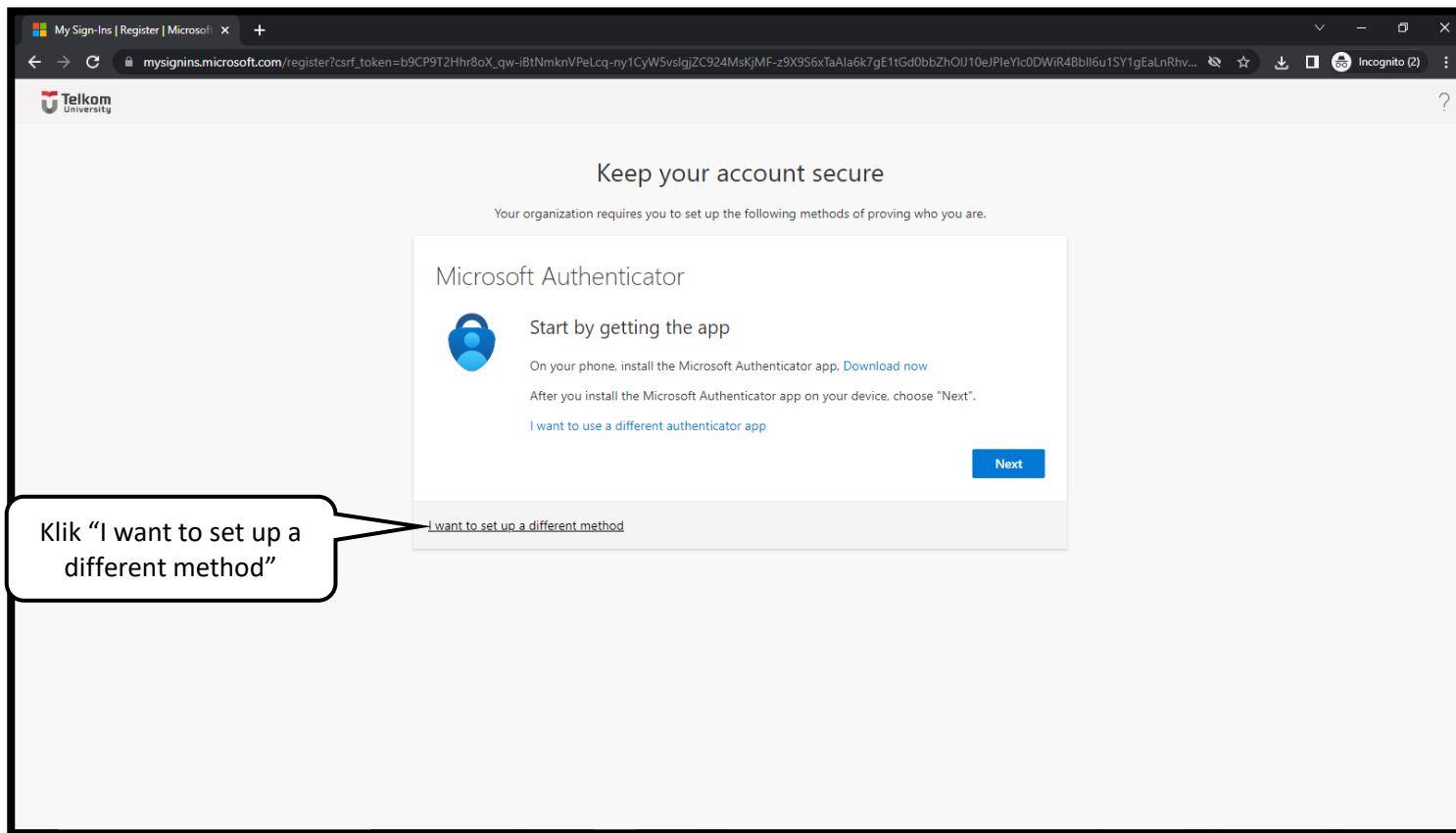
Panduan Mengaktifkan Autentikasi Multifaktor Office 365 Menggunakan SMS

Langkah 1 --- Login pada laman <https://lms.telkomuniversity.ac.id> menggunakan username dan password SSO anda, kemudian Klik "Next".



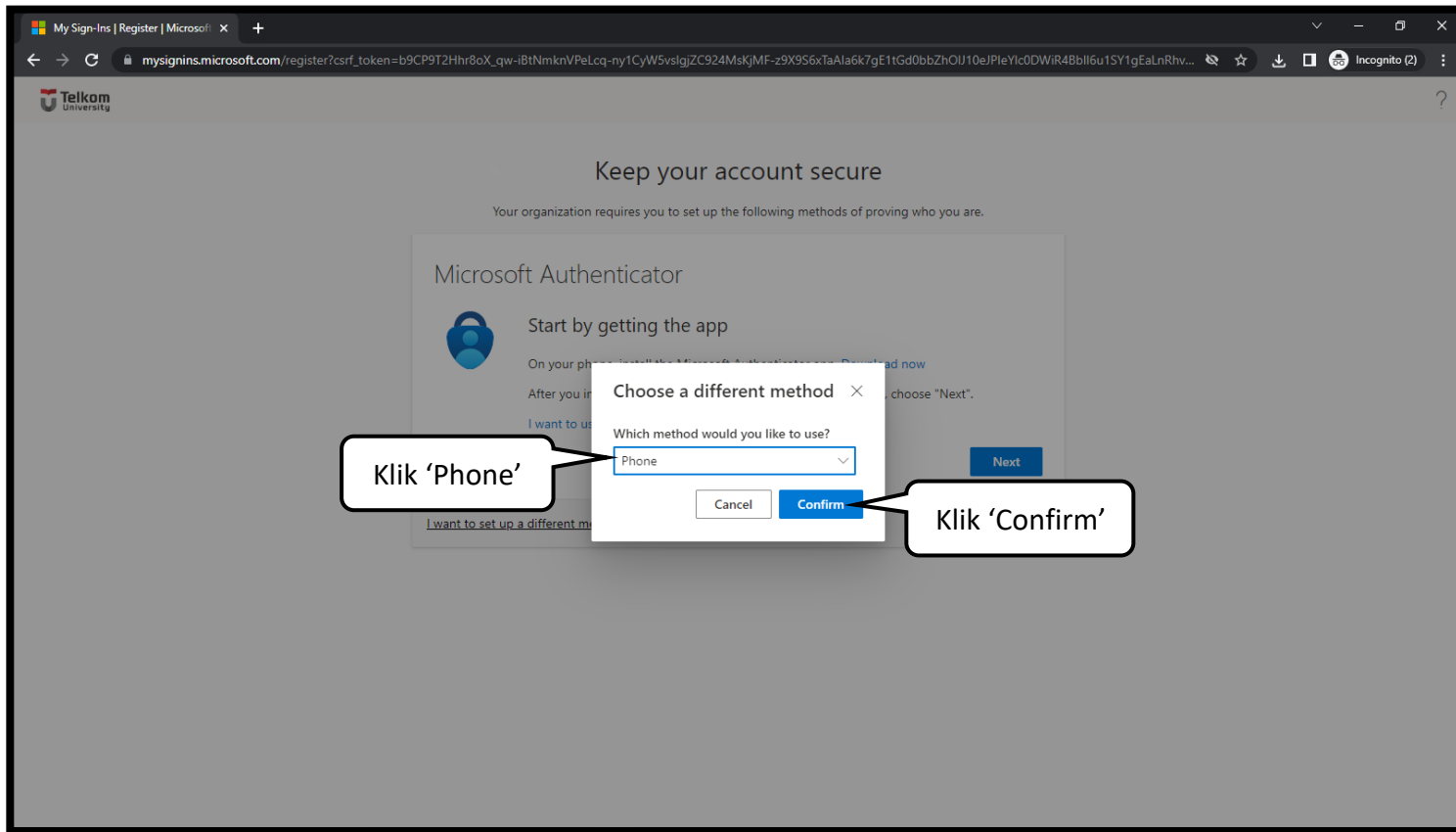
CeLOE Service (CLOVE)

Langkah 2 --- Jika sudah masuk pada halaman berikut, klik “I want to set up a different method”.



CeLOE Service (CLOVE)

Langkah 3 --- Pilih metode Telepon/Phone, kemudian klik "Confirm".



CeLOE Service (CLOVE)

Langkah 4 --- Pilih Negara Indonesia (+62), kemudian masukkan nomor telepon aktif Anda tanpa menggunakan angka 0 (nol) dan pilih

My Sign-Ins | Register | Microsoft

mysignins.microsoft.com/register?csrf_token=b9CP9T2Hhr8oX_qw-iBTNmknVPeLcq-ny1CyW5vslqjZC924MskJMF-z9X956xTaAla6k7gE1tGd0bbzhOU10ePleYic0DWiR4Bbl6u1SY1gEaLnRh...

Telkom University

Keep your account secure

Your organization requires you to set up the following methods of proving who you are.

Phone

You can prove who you are by answering a call on your phone or texting a code to your phone.

What phone number would you like to use?

Indonesia (+62) 8211

Text me a code
 Call me

Message and data rates may apply. Choosing Next means that you agree to the [Terms of service](#) and [Privacy and cookies statement](#).

Next

[I want to set up a different method](#)

Pilih 'Indonesia (+62)'

Pilih 'Text me a code'

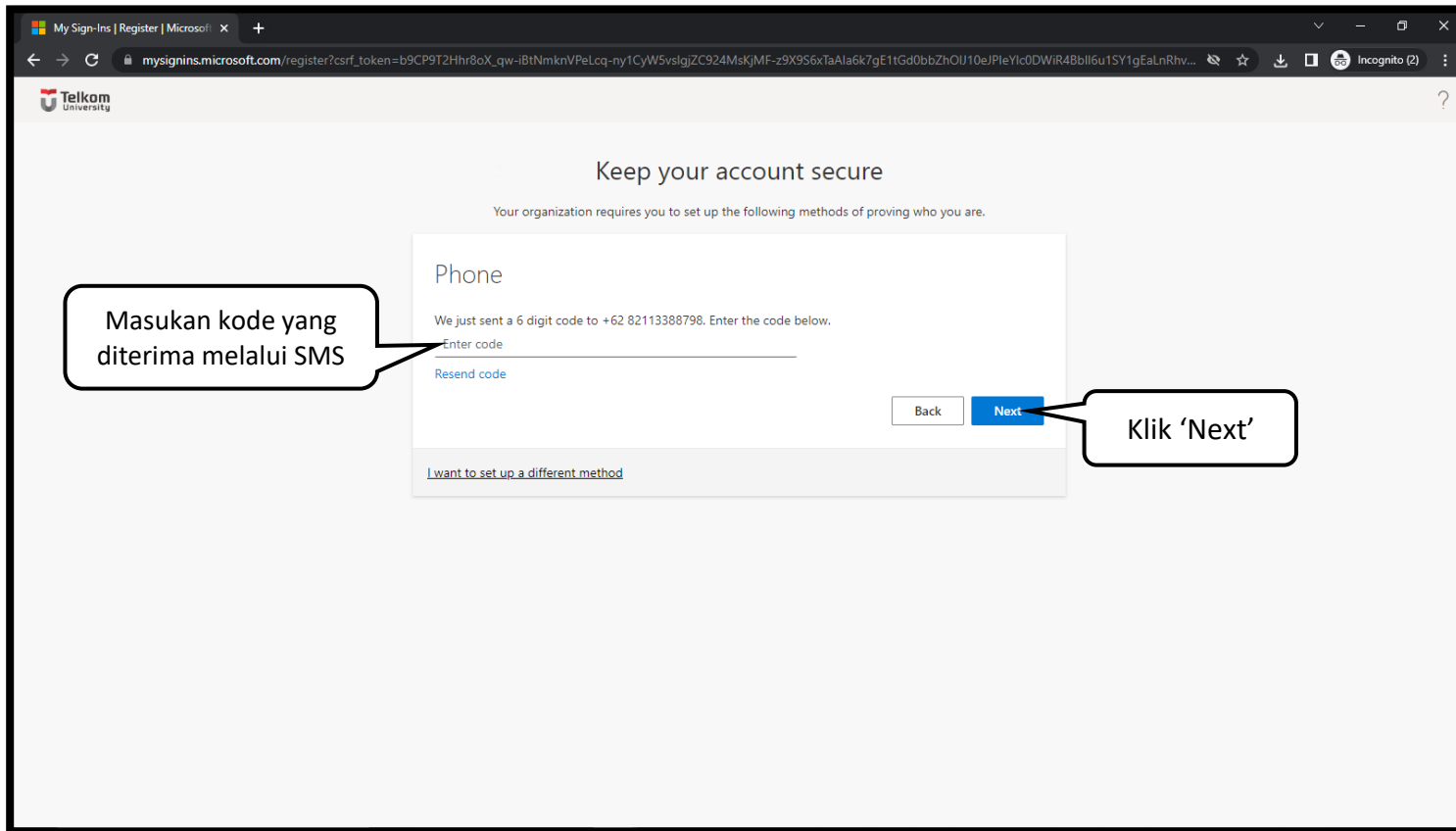
Masukan nomor handphone

Klik 'Next'

metode yang diinginkan, lalu Klik "Next".

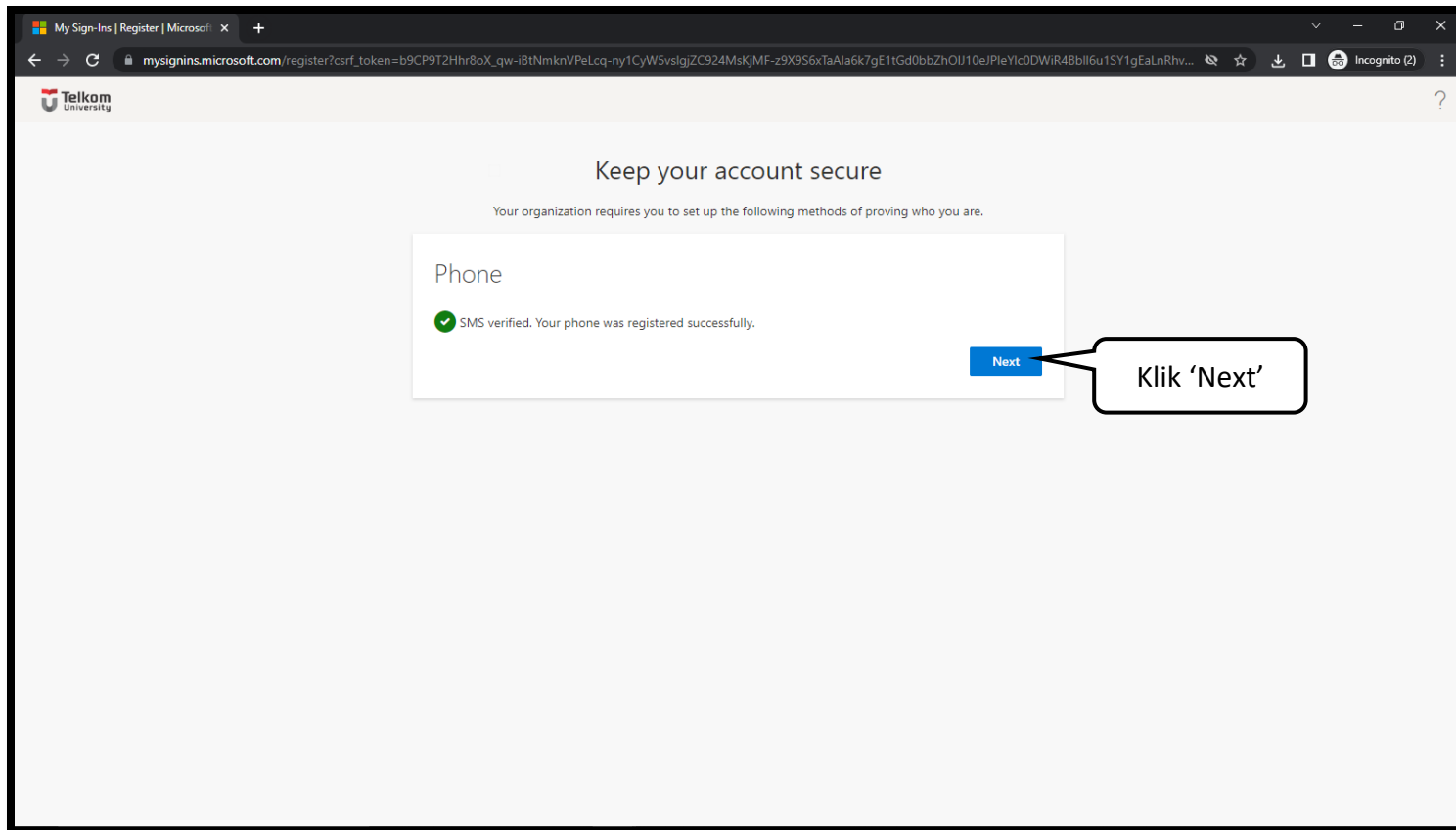
CeLOE Service (CLOVE)

Langkah 5 --- Masukkan kode Verifikasi yang diterima pada ponsel Anda, kemudian klik "Next".



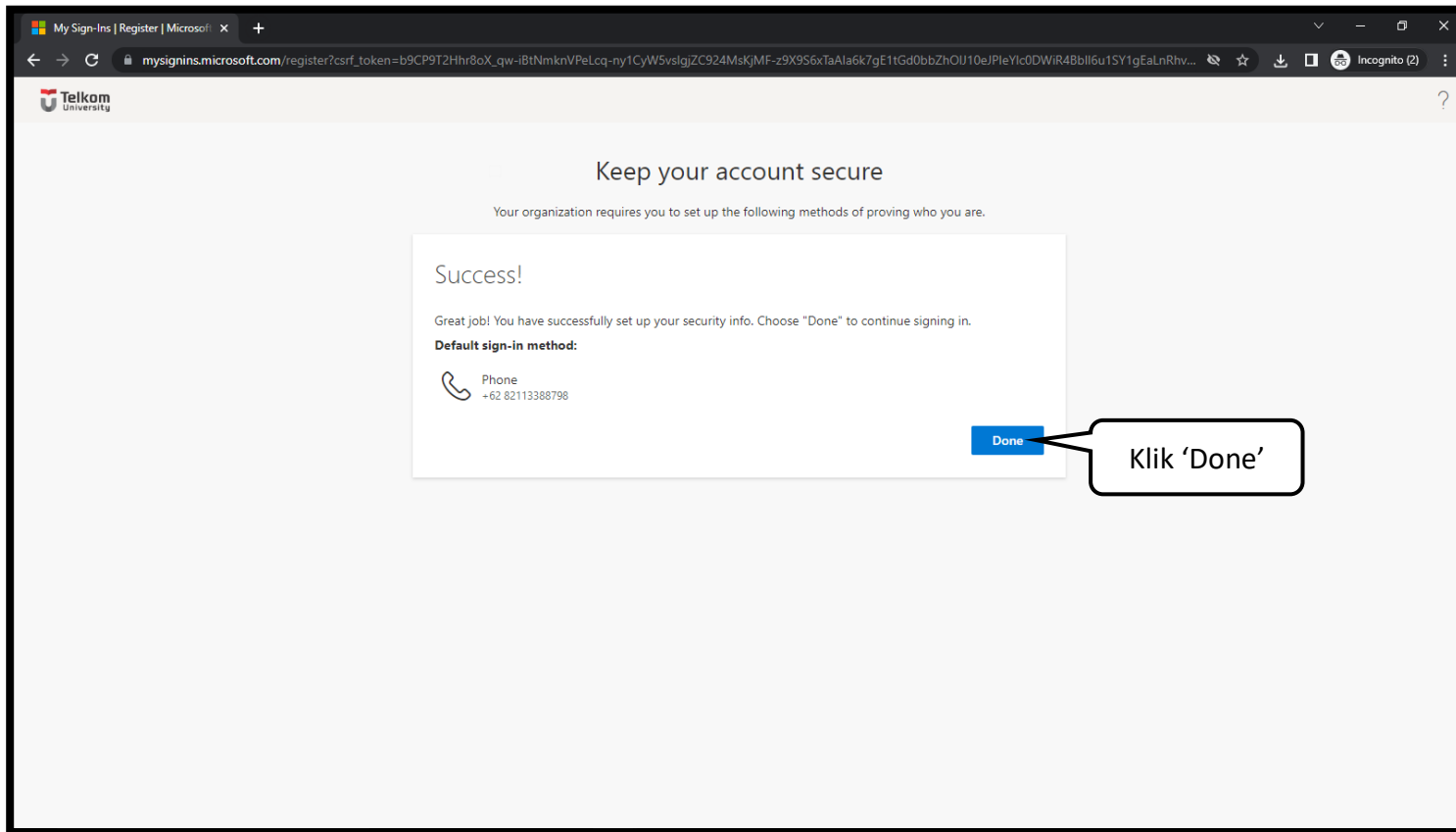
CeLOE Service (CLOVE)

Langkah 6 --- Proses verifikasi nomor telepon Anda telah berhasil dilakukan, silakan klik "Next".



CeLOE Service (CLOVE)

Langkah 7 --- Berhasil mengaktifkan autentikasi multifaktor, selanjutnya Anda dapat melanjutkan proses login LMS seperti biasa.



Main Office: Gd. Bangkit Lt.5 Telkom University. Remote Office1: Gd. Marore Lt.3 Gegerkalong. Remote Office2: Gd. Marore Lt.3 Gegerkalong Gd. Panehan Lt.1 Telkom University
Helpdesk: Mail clove@telkomuniversity.ac.id; WA +62 821 1666 3563;